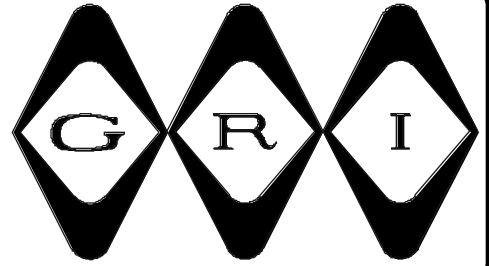


SPECIAL SERVICES



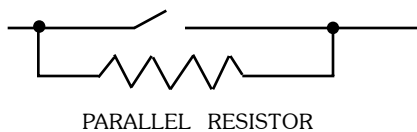
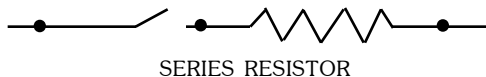
CABLE & WIRE OPTIONS

G.R.I. stocks 3 basic lead lengths at reduced costs for our customers. Special lengths, colors and styles are available for additional charges. Please call factory for pricing.

12" Leads #22AWG	Standard
36" Leads #22AWG	Stock Item
72" Leads #22AWG	Stock Item
Special Lengths #22AWG	Non-Standard
Zip Cord	Non-Standard
Jacketed 2 Conductor	Non-Standard
Jacketed 4 Conductor	Non-Standard
Jacketed 6 Conductor	Non-Standard
#5702 Armored 3/16" ID Bulk SquareLok	Unstrung Cable
#8296 Armored 7/32" ID Bulk SquareLok	Unstrung Cable
#8449 Armored 5/16" ID Bulk SquareLok	Unstrung Cable
#5702 & #8296 Armored Cable	Strung Including Ferrules
#8449 Armored Cable	Strung Including Ferrules
Supervisory Loop	Using Standard Wire
Dummy Center Terminal	

DIODE & RESISTOR SWITCHES

G.R.I. makes available resistors and/or diodes built in for your convenience. Standard tolerance is $\pm 5\%$. Other tolerances available upon request. Call and talk with your G.R.I. representative regarding value, etc.



Resistors	1 Resistor Any Value	\$1.00
	2 Resistors Any Value	\$1.50
Diodes	1 Diode	\$1.00
	2 Diodes	\$1.50

DPDT available in a variety of GRI Recessed and Surface Mount Contacts.
Please call factory for more information

CUSTOM MANUFACTURING

G.R.I. offers custom manufacturing to help you out in those situations where a standard product just won't work. Our representatives at the factory can help you with your special needs. Please give us a call.

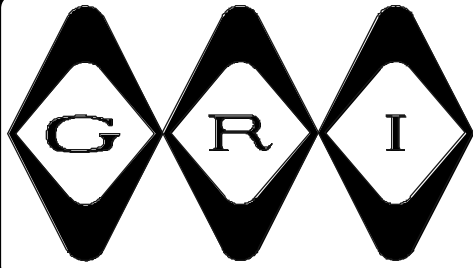
All Costs Are Approximate And Are Subject To Change Without Notice.

GEORGE RISK INDUSTRIES, INC.
G.R.I. PLAZA
KIMBALL, NE 69145



MADE IN U.S.A.

TOLL-FREE 1-800-445-5218 • 1-800-523-1227
(308) 235-4645 • FAX (308) 235-3561
E-MAIL: grisales@megavision.com
WEB SITE: www.grisk.com



SPECIAL SERVICES

WHEN RELIABILITY COUNTS — YOU CAN COUNT ON G.R.I.!!!!

“A SWITCH IS A SWITCH” is a statement we hear from time to time — usually from those we refer to as “price shoppers”. This type “shopper” evidently only considers the actual cost of the contact itself in computing his cost of installation — not the cost of repeated trips to the site of a false alarm or complaints from their customer that their system is not operating correctly. Just what is the expense involved for a warranty service call??? Certainly more than the price of a switch!!

QUALITY CONTROL

G.R.I.'s “Zero” Defect Program is the standard our employees follow. They know that quality cannot be inspected “IN”. We build with quality parts, quality people and quality standards. Each G.R.I. production line must 100% inspect the sub-assemblies produced by their line. Quality Control Inspectors then do an on-the-spot inspection of 20% of these sub-assemblies PRIOR to moving the lot onto the next process. If any defective assemblies are discovered, another 20% of the lot is inspected by Q.C., continuing on up to 100% inspection. All faulty assemblies are discarded plus an investigation is begun to determine the cause for the defective assemblies.

LIFETIME WARRANTY

G.R.I. is one of a very small group of manufacturers who continue to offer their customers a lifetime warranty on their products. We have always felt that with this guarantee, we are showing the confidence G.R.I. has in our workmanship and quality of components used in manufacturing our contacts. To see the confidence level of other switch manufacturers, check out their warranty.

INDIVIDUAL PRIVATE LABELING

Private Labeling adds credibility to your Company and G.R.I. offers a variety of private labeling, including heat stamp, foil and mold insert. All surface mount switches, except the 50 and 50F series, are available for this service. First time heat stamp orders require a one-time set-up charge of \$30 - \$50, dependent upon the intricacy of the plate design, plus a \$.05 charge per case. Mold inserts require a special quote process. All requests for private labeling must be accompanied by camera ready art work and a minimum order of 100 sets of the contact you wish to be private labeled.

Foil colors available for private labeling are White, Gold, Red, Green, Blue, Silver and Black.

GEORGE RISK INDUSTRIES, INC.
G.R.I. PLAZA
KIMBALL, NE 69145



MADE IN U.S.A.

TOLL-FREE 1-800-445-5218
TOLL-FREE 1-800-523-1227
(308) 235-4645

FAX (308) 235-3561
E-MAIL: grisales@megavision.com
WEB SITE: www.grisk.com