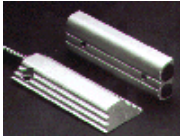
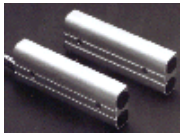


200 Series Surface Mount Switch Sets



200-36
Floor Mount

- Lifetime Warranty
- UL and ULC approved
- Gap: min. 3/8", max 3"
- Available in closed loop, open loop and SPDT
- Extruded aluminum switch
- 36" stainless steel armored cable
- Floor or wall mount adaptable
- Magnet bracket included
- Supervisory loops available
- Switch, magnet and hardware are available separately

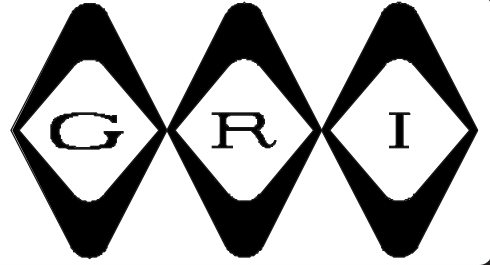


250-36
Wall Mount

The GRI 200 Series is referenced and produced as an industrial grade floor mount switch. Primarily used for the protection of overhead doors where the operation of heavy motorized traffic would make it impossible to use any type of plastic encapsulated switch.

The 200 housing is extruded from 6063 T5 aluminum material and tested to withstand a crushing force of 20,000 pounds or 10 tons without harming the delicate reed switch. All mounting hardware including lead anchors are provided as well as a mounting bracket for the actuating magnet.

INDUSTRIAL OVERHEAD DOOR SWITCH SET



200/250 SERIES

- ◆ Extruded Aluminum Floor or Wall Mount Switch
- ◆ Screw Mount ◆ #22AWG In 36" Stainless Steel Armored Cable
- ◆ Longer Leads Upon Request ◆ Hermetically Sealed
 - ◆ Plated Contacts Resist Sticking or Freezing
- ◆ Magnet, Bracket and Mounting Hardware Included
 - ◆ Built-in E.O.L. Resistors Upon Request
 - ◆ Supervisory Loops Available Upon Request
 - ◆ Switches and Magnets Available Separately
 - ◆ Lifetime Warranty



200-36



250-36

PART NUMBERS:

	Gap	Closed Loop	Open Loop	SPDT	DPDT
Floor Mount	2 1/2" 3"	200-36 200-36HD	210-36	220-36	230-36
Wall Mount	2 1/2" 3"	250-36 250-36HD	260-36	270-36	280-36

GEORGERISK INDUSTRIES, INC.
GRI. PLAZA
KIMBALL, NE 69145



MADE IN U.S.A.

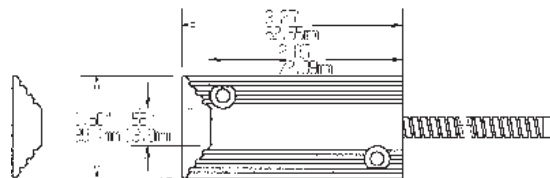
TOLL-FREE 1-800-445-5218
TOLL-FREE 1-800-523-1227
(308) 235-4645
FAX (308) 235-3561
E-MAIL: grisales@megavision.com
WEB SITE: www.grisk.com



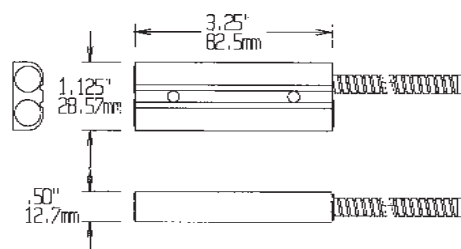
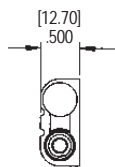
INDUSTRIAL OVERHEAD DOOR SWITCH SET

INSTALLATION APPLICATIONS:

The G.R.I. 200 series is referenced and produced as an industrial grade floor mount switch. Primarily used for the protection of overhead doors where the operation of heavy motorized traffic would make it impossible to use any type of a plastic encapsulated switch. The 200 housing is extruded from a 6063 T5 aluminum material and tested to withstand a crushing force of 20,000 pounds or 10 tons without harming or causing failure of the delicate reed switch. All mounting hardware including lead anchors are provided as well as a mounting bracket for the actuating magnet. A 1/4" masonry bit is required for lead anchor installation.



**Floor Mount
200-36**



**Wall Mount
250-36**

GRI products meet or exceed these minimum general specifications:

PART NUMBER	LOOP TYPE	ELECTRICAL CONFIG.	REED FORM	MAXIMUM INITIAL CONTACT RESISTANCE (Ω)	MAXIMUM CONTACT RATING (W)	MAXIMUM SWITCHING VOLTAGE (VDC)	MAXIMUM SWITCHING CURRENT (A)
200-36	Closed	N/O	A	.150	10	200	.500
200-36HD	Closed	N/O	A	.150	10	200	.500
250-36	Closed	N/O	A	.150	10	200	.500
250-36HD	Closed	N/O	A	.150	10	200	.500
210-36	Open	N/C	B	.140	5	175VDC	.250
260-36	Open	N/C	B	.140	5	175VDC	.250
220-36	Open/Closed	SPDT	C	.140	5	175VDC	.250
270-36	Open/Closed	SPDT	C	.140	5	175VDC	.250
230-36		DPDT	CX2	.140	5	175VDC	.250
280-36		DPDT	CX2	.140	5	175VDC	.250

WARRANTY:

Lifetime warranty against workmanship, material and factory defects.

CONTACT YOUR G.R.I. DISTRIBUTOR OR CALL:

GEORGERISK INDUSTRIES, INC.
GRI PLAZA
KIMBALL, NE 69145



MADE IN U.S.A.

TOLL-FREE 1-800-445-5218
TOLL-FREE 1-800-523-1227
(308) 235-4645

FAX (308) 235-3561

E-MAIL: grisales@megavision.com

WEB SITE: www.grisk.com