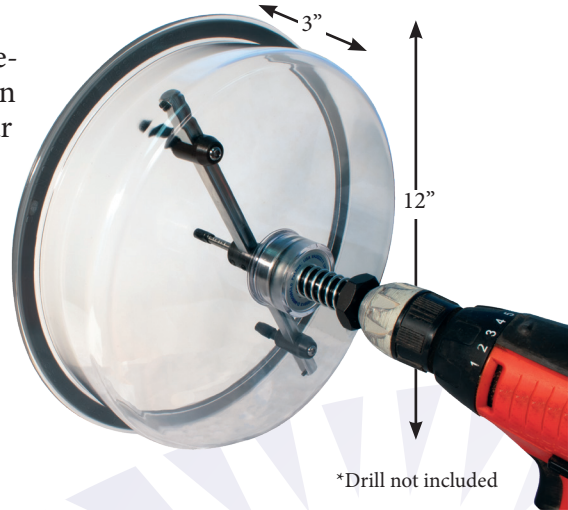


Adjustable Double Blade Hole Cutters

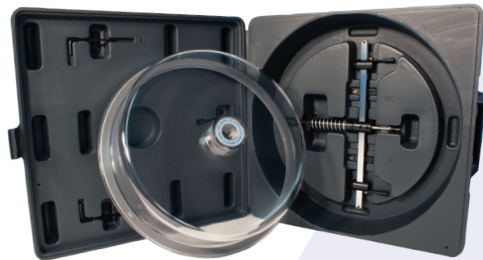
10" Adjustable Double Blade Hole Cutter

This double blade hole cutter adjusts from 1.25" to 10" diameter and up to 2" in depth. The transparent cowl prevents chips from flying into eyes while cutting. Cutter can be used with any variable speed drill (not included). Four counter weights and compression spring limit vibration. Features transparent safety and dust guard. Comes with storage case. Great for canned lighting and speakers.



APPLICATIONS

- For cutting round holes in ceilings, walls and floors
- Cuts plywood, plasterboard and acrylic sheet up to 2.7 cm
- Drilling from opposite side allows up to 5.2 cm thick cuts
- Maximum cutting diameter is 25.4 cm



Durable case included: 13" x 14"

BASIC INSTRUCTIONS

- Adjust to desired width and depth
- Attach to drill
- Remove safety caps from blades and pilot bit
- Always wear safety glasses when using product
- Verify that there are no electrical components behind the surface to be drilled
- Slowly drill pilot hole in center of desired area
- Begin drilling process slowly
- Allow dust to settle within bowl several seconds before removing from surface
- Empty and wipe dust tray with soft cloth
- Clean surface with tack cloth
- Disassemble and store for future use

COMPLETE INSTRUCTIONS WITH PURCHASE.

DESCRIPTION	PART NO.	MODEL
10" Double Blade Hole Cutter	LS-56-015	DBHC10
Replacement Blades for 10" Hole Cutter	LS-56-017	DBRBHC
Pilot Drill Bit for 10" DBHC	LS-56-018	DBHCP