

2 1/2" Commercial Surface Mount Switch Set

WWW.GRISK.COM



28 / 29 / 29P Series

- ◆ This versatile series sets the Industry Standard for Commercial and Light Industrial applications
 - ◆ Surface mount magnetic contact
 - ◆ Screw down flanges
- ◆ 24" #22AWG 2 conductor jacketed lead on 29PA
 - ◆ Concealed screw terminals on 28 series
 - ◆ Side screw terminals on 29 series
 - ◆ Longer leads on 29PA upon request
 - ◆ Hermetically sealed
 - ◆ Plated contacts resist sticking or freezing
- ◆ Covers, spacers and mounting hardware included
- ◆ Built in E.O.L. Resistors and Diodes upon request
- ◆ Supervisory loops and dummy terminals upon request
 - ◆ Switches and magnets available separately
 - ◆ Colors: white, brown and gray
 - ◆ Private labeling upon request
 - ◆ Lifetime Warranty



	Part Numbers			
	<u>Closed Loop</u>	<u>Open Loop</u>	<u>SPDT</u>	<u>DPDT</u>
Standard Gap	28A	28B	28C	
up to 1" and	29A	29B	29C	
5/8" on steel	29PA } C€	29PB	29PC	29PD
Wide Gap	28AWG	28BWG	28CWG	
up to 1 1/2" and	29AWG	29BWG	29CWG	
3/4" on steel	29PAWG	29PBWG	29PCWG	29PDWG
Extra Wide Gap	28AXWG	28BXWG	28CXWG	
up to 2" and	29AXWG	29BXWG	29CXWG	
1" on steel	29PAXWG	29PBXWG	29PCXWG	

WARRANTY: Lifetime warranty against workmanship, material and factory defects.

GEORGE RISK INDUSTRIES, INC.
G.R.I. PLAZA
KIMBALL, NE 69145

WWW.GRISK.COM



1-800-445-5218
1-800-523-1227
(308) 235-4645
FAX (308) 235-3561
E-MAIL: sales@grisk.com

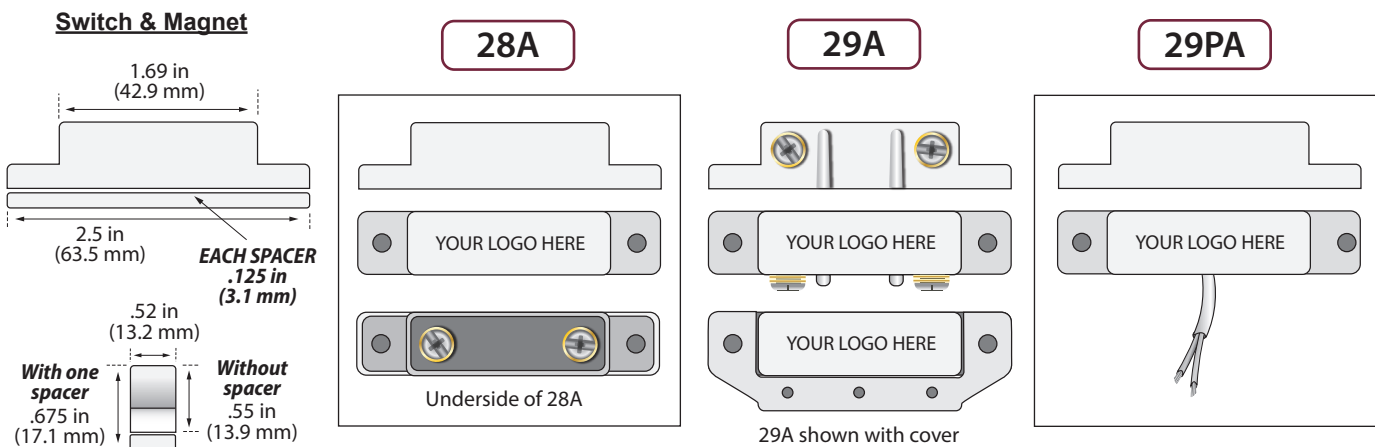
2 1/2" Commercial Surface Mount Switch Set



WWW.GRISK.COM

INSTALLATION APPLICATIONS

This series offers a standard gap of 1 inch, a wide gap of up to 1 1/2" and an extra wide gap of 2 inches and can be installed on a steel surface with a minimum gap penalty. The "P" style is a pre-wired switch with 2 feet of conductor cable. A broad range of mounting brackets are also available. See spec. sheet in accessory section of our catalog.



GRI PRODUCTS MEET OR EXCEED THESE MINIMUM GENERAL SPECIFICATIONS:

Part Number	Loop Type	Electrical Configuration	Reed Form	Max. Initial Contact Resistance (Ω)	Max. Contact Rating (W)	Max. Switching Voltage (VDC)	Max. Switching Current (A)
28A	Closed	N/O	A	.150	10	160	.400
28AWG	Closed	N/O	A	.150	10	160	.400
28AXWG	Closed	N/O	A	.150	10	160	.400
29A	Closed	N/O	A	.150	10	160	.400
29AWG	Closed	N/O	A	.150	10	160	.400
29AXWG	Closed	N/O	A	.150	10	160	.400
29PA	Closed	N/O	A	.150	10	160	.400
29PAWG	Closed	N/O	A	.150	10	160	.400
29PAXWG	Closed	N/O	A	.150	10	160	.400
28B	Open	N/C	B	.140	5	175	.250
28BWG	Open	N/C	B	.140	5	175	.250
28BXWG	Open	N/C	B	.140	5	175	.250
29B	Open	N/C	B	.140	5	175	.250
29BWG	Open	N/C	B	.140	5	175	.250
29BXWG	Open	N/C	B	.140	5	175	.250
29PB	Open	N/C	B	.140	5	175	.250
29PBWG	Open	N/C	B	.140	5	175	.250
29PBXWG	Open	N/C	B	.140	5	175	.250
28C	Open/Closed	SPDT	C	.140	5	175	.250
28CWG	Open/Closed	SPDT	C	.140	5	175	.250
28CXWG	Open/Closed	SPDT	C	.140	5	175	.250
29C	Open/Closed	SPDT	C	.140	5	175	.250
29CWG	Open/Closed	SPDT	C	.140	5	175	.250
29CXWG	Open/Closed	SPDT	C	.140	5	175	.250
29PC	Open/Closed	SPDT	C	.140	5	175	.250
29PCWG	Open/Closed	SPDT	C	.140	5	175	.250
29PCXWG	Open/Closed	SPDT	C	.140	5	175	.250
29PD		DPDT	CX2	.140	5	175	.250
29PDWG		DPDT	CX2	.140	5	175	.250

GEORGE RISK INDUSTRIES, INC.
G.R.I. PLAZA
KIMBALL, NE 69145

WWW.GRISK.COM



1-800-445-5218
1-800-523-1227
(308) 235-4645
FAX (308) 235-3561
E-MAIL: sales@grisk.com